



### From the President: "MARCH"ING INTO SPRING



March is a busy month!

There's the first day of spring - I know I'm looking forward to warmer weather and spending more time outdoors.

Then there is daylight savings time - spring forward...yes! I know, we all lose an hour of sleep, (nothing like messing with the sleep cycle), but our daylight hours get longer. A sure sign of better days ahead!

Aye...and don't you go forgettin' about St. Patrick's Day....for our Irish members and those of you who aren't the least bit Irish, but enjoy corned beef and cabbage, not to mention a little green beer.

Statewide WAHI elections for President and Vice President will also be held this month. Be on the lookout for emails within the next few days - the email will contain detailed instructions on the voting process and the specific election dates! I have decided not to run again after serving since 2011 - time for some new faces on the Board.

The next Board of Directors meeting will be held on Friday, March 18<sup>th</sup> at the Clarion Hotel and Conference Center in Milwaukee. All members are welcome to attend, just be sure to contact Julie in advance to ensure appropriate seating and handouts. Specific details about the time of the meeting can be found on the website under [Events](#).

The WAHI Spring 2016 Education House and Training Seminar is coming up fast - March 18<sup>th</sup> and 19<sup>th</sup>. The Education House, held at a residential home in the Milwaukee area this year, is again offering a peer review in the morning and rotation training in the afternoon. Our Saturday program, held at the Clarion Hotel and Conference Center in Milwaukee, will include speakers Mark Meiling of Foresight Home Performance, Tom Feiza of Tom Feiza, Mr. Fix-It, Inc., Joe Martis & Matt Snyder of Guardian Exteriors and the ever-popular, Attorney Roy Wagner of von Briesen and Roper. You can hear a pin drop in the room when Roy speaks, no one wants to miss a word he says. The full details are listed on the WAHI website. I encourage you to sign up via the website, it's **easy** and only takes a few minutes.

And last but not least, Easter falls in March this year. Enjoy your time spent with family and friends!

~Doug Hoerth

### Inside this issue:

Chapter Updates  
Page 2

What's Happening  
in WAHI  
Page 3

Spring Seminar  
Page 4

State Election  
Page 5

Charlie's House  
Page 11

New Members  
Page 13



## WAHI Spring 2016 Training Seminar

It's not too late to join us  
Friday, March 18th and Saturday, March 19th  
The Clarion Hotel and Conference Center  
Howell Avenue in Milwaukee (near airport)!

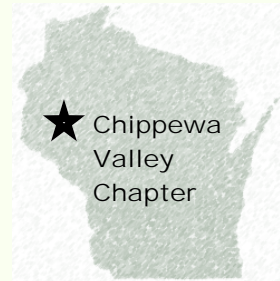


Central Chapter

February's speaker, Vince Hopkins of Sure-Dry Basements handed out booklets to show clients the proper way to dry out crawl spaces and discussed the proper way to eliminate moisture in basements.

**NEXT MEETING: Wednesday, March 16**  
Social at 6:00 p.m. & Dinner/Meeting at 6:30 p.m.  
Meeting and meal is \$30; meeting is only \$10.  
*Palms Supper Club Steak House, 5912 Business Hwy 51, Schofield*  
**Speaker: A HVAC Specialist**

**For speaker information, or to provide a suggestion/lead, please contact the Chapter President, Richard Duerkop at 715-241-8222.**



Chippewa Valley Chapter

**NEXT MEETING: Wednesday, March 2**  
Buffet Dinner at 5:30 p.m. & Meeting at 6:00 p.m.  
*Jade Garden Restaurant, 3620 Gateway Dr., Eau Claire*  
**Speaker: Zeus Stark, Next Step Energy**  
Zeus will be presenting information on renewable energy , solar and high efficient boiler systems.

**For speaker information, or to provide a suggestion/lead, please contact Chapter Education Chair, Pete Saltness at 715-829-7348.**



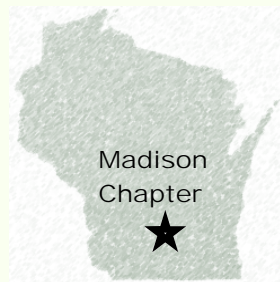
Fox Valley Chapter

February's speaker was Nate Fritz with the Clean Water Center in Appleton. He discussed water testing, issues and treatment.

**NEXT MEETING: Tuesday, March 15**  
Social at 6:00 p.m. & Meeting/Dinner at 6:30 p.m.  
*Stone Toad, 1109 S. Oneida St., Menasha*  
**Speaker: Sean Landstrom, Integrity Plumbing**

**For speaker information, or to provide a suggestion/lead, please contact Chapter Education Chair, Scott Hansen at 920-716-3025.**

**The Madison Chapter meets only the following months: January, February, May, June, September and October.**



Madison Chapter

February's speakers, Kirk and Lindsay Mefford of Madison Radon Testing, LLC. Provided a question and answer session on what their company can and cannot do for Madison area home inspectors. They shared information on National Radon Proficiency Program (NRPP) licensing and issues they have had to work through. In addition, the group discussed calibration, mitigation, types and functionality of radon testers.

**NEXT MEETING: \*Thursday, May 19 (no meetings in March or April)**  
Roundtable at 6:00 p.m. & Meeting/Dinner at 6:30 p.m.  
*Rocky Rococo's Pizza, 1753 Thierer Rd., Madison*  
**Speaker: TBD**

**For speaker information, or to provide a suggestion/lead, please contact the Chapter President, Denny Kruger at 608-835-5395.**



Milwaukee Chapter

**NEXT MEETING: Tuesday, March 8**  
Social at 6:00 p.m., Dinner at 6:30 p.m. and Meeting at 7:00 p.m.  
*Klemmer's Banquet Center 10401 W. Oklahoma Ave., West Allis*  
**Speaker: Affiliate members Kevin Maynard of Open Hearth Home Inspection and Paul Vaccaro of Accurate Basement Repair.** They will be speaking on water infiltration in foundation walls and drain tile testing.

**For speaker information, or to provide a suggestion/lead, please contact Chapter Education Chair, Steven Knoebel at 414-828-4217.**

# What's Happening in WAHI?

By Executive Director, Julie Arnstein

Here is the brief recap of activity in the past month and a preview of what lay ahead. If anyone would ever like further information on something mentioned in this piece just let me know .... [julie@wahigroup.com](mailto:julie@wahigroup.com), 414.299.9766 or 877.399.WAHI



## February 2016

- The WAHI Trade Names and Trade Marks have been renewed for another 10 years – Wisconsin Association of Home Inspectors, Inc., our acronym - WAHI and our logo.
- Thank you to Milwaukee member Nick Jewett for pointing out a “glitch” in the member search area of the website. The issue has been corrected. I encourage everyone to do a search for yourself to make sure your profile is displayed as you would like it to be. Step-by-step instructions have been added to the Find a Member page to aid in the search process - check it out!
- Please continue to reach out to new affiliate members and suitable candidates to serve as participants in our Arbitration program. Arbitration Committee Chair Mark Thomas made a plea to all Chapter-Elected Members at Large on the Board of Directors, as well as all attendees during his fall 2015 seminar presentation on Risk Management. In order for WAHI to have a successful Arbitration program we need more qualified affiliate members, at each chapter, who can then be trained to serve as a Contractor Arbitrator. A solid program needs to be in place should the need for arbitration arise. It is every WAHI member's responsibility to assist in this goal.

## March and Beyond.....

- The State Election is upon us! See page 5 in this newsletter for details and important dates. This election is to elect State President and Vice President - both positions are a 2-year term (May 1, 2016 through April 30, 2018). Affiliate member Cassidy Kuchenbecker of Environmental Initiatives has volunteered again this year to assist with the online election. Thanks Cassidy!
- Our Education Committee is excited to present the WAHI Spring 2016 Education House and Training Seminar. We are scheduled for Friday, March 18 and Saturday, March 19, in Milwaukee at The Clarion Hotel and Conference Center across from the airport. The WAHI Annual Meeting will be held during lunch. See the WAHI website for details and registration – it not too late to sign up!
- Our next Board Meeting will be held in conjunction with the Spring Seminar and Education House. We are scheduled from 2 pm to 5 pm on Friday March 18th at the Clarion. All WAHI general members are welcome to attend. Please let me know by Friday March 11<sup>th</sup> to allow for sufficient seating and handouts.
- Our 15th Annual Meeting will be held during lunch at the WAHI Spring 2016 Training Seminar at the Clarion Hotel and Conference Center on Howell Avenue across from General Mitchell International Airport. Anyone unable to attend the seminar but interested in attending the Annual Meeting should contact me by Friday March 11<sup>th</sup>.

# WAHI Spring 2016 Training Seminar

It's not too late to join us March 18<sup>th</sup> and 19<sup>th</sup> at The Clarion Hotel and Conference Center on Howell Avenue in Milwaukee (airport)!

**Friday - Education House and Vendor Cocktail Party**

**Saturday - Training Seminar and Annual Meeting**

At the Education House, long-time affiliate member, Kurt Soens of Smoke Stacks, will provide a demonstration of a chimney fire – you don't want to miss that!



Details and registration at [www.wahigroup.com](http://www.wahigroup.com)

See you then!



17425 Gebhardt Rd.  
Brookfield, WI 53045  
Office: (262) 797-8181  
Cell: (414) 588-5800  
[www.smokestacks.net](http://www.smokestacks.net)



The only chimney company in WI to win the BBB Torch Award for Business Ethics and Integrity .

**Q:** How do I tell if a chimney is a full **masonry** chimney or a **pre-fabricated** chimney?

**A:** With today's construction, it is sometimes hard to tell if a chimney on a home is full masonry, partial masonry, or is pre-fabricated covered with a product that looks like masonry. Often a home can have a full masonry front house facade, but have those same facade full bricks are cut down so they are only 1" thick and back plastered onto a wood structure that is surrounding a fireplace vent pipe. To make things even worse, sometimes architects install full masonry brick on wood trusses in the attic to give the appearance of a masonry chimney. Sometimes they are also going three sides full masonry from grade, but not on the side built into the home, and then all 4 sides above the roof line.

**So how do you know?** The crown, cap or flashing detail are the items that should help you figure it out. Metal crown covers, round or detailed chimney rain caps, and flashing that is behind the masonry or on top of the masonry, should help you decipher what type of chimney it is. Once you have figured it out, the next step is to make sure it has the right flashing detail for that chimney.



# 2016 STATE ELECTION

On March 1st an email was sent to all home inspector and retired members about the upcoming election. The email detailed the election process, election dates (Thursday, March 10 through Monday, March 14), listed each candidate and their bio, and provided your personalized log-in and password to participate in the election.

The membership will be electing 2 State Board of Director positions – President and Vice President. Each position is a 2-year term. The election will be held in early March and the results announced at the Annual Meeting in Milwaukee on March 19, 2016. Important dates are also listed below.

The election will again be held electronically – using the same process as the past 3 years. Members without an email address will receive a postcard with instructions to participate in the election.

Please contact Nominations and Elections Chair, Andy Helgeson, if you have questions, 414.315.0266 or [ajhelgeson@wi.rr.com](mailto:ajhelgeson@wi.rr.com) You may also contact Julie Arnstein at 877.399.WAHI or [julie@wahigroup.com](mailto:julie@wahigroup.com).

## \* Important Dates\*:

- ◆ Thursday March 10<sup>th</sup> through Monday March 14<sup>th</sup> - Election via [www.votingplace.net](http://www.votingplace.net)
- ◆ Monday March 14<sup>th</sup> - Voting Deadline: Vote must be cast by this date to be included in the ballot tally.



## INSTRUCTIONS TO UPDATE YOUR PROFILE IN 5 EASY STEPS:

1. Go to [www.wahigroup.com](http://www.wahigroup.com).
2. From the Home Page - upper right corner, select "LOGIN."  
ENTER your email address on file with WAHI \* and password.  
\*If you have multiple email addresses and are uncertain of your WAHI email address, contact Julie at [julie@wahigroup.com](mailto:julie@wahigroup.com) - she can provide your WAHI address or update it for you.
3. Once logged in, the upper right corner shows your name, "Change Password" and "Log Out." CLICK on your name.
4. You should now be on the "My Profile" page. Select "EDIT PROFILE" in the gray rectangular box.
5. After making your changes/updates, select "SAVE" in the gray rectangular box at the bottom of the page.



**FREE TRIAL  
AVAILABLE NOW!**

Get it at [www.HomeGauge.com](http://www.HomeGauge.com)

HOME GAUGE SOFTWARE PRESENTS HOME INSPECTION REPORTS WITH VIDEO  
FEATURING HG WINDOWS DESKTOP SOFTWARE AND HG COMPANION FOR MOBILE DEVICES  
WITH ONLINE REPORT DELIVERY & STORAGE CLOUD TRANSFER CLOUD BACKUP  
EXPANDING PICTURES EMAIL MARKETING CAMPAIGNS ONLINE AGREEMENTS  
SOCIAL NETWORK INTEGRATION NO PER REPORT FEES

**HomeGauge**

THIS AD PARODY IS NOT YET RATED.  
HOME GAUGE IS NOT AFFILIATED WITH NETFLIX  
OR ANY OTHER COMPANY WITH SCARY LAWYERS.

HomeGauge.com  
828-254-2030

**HOME GAUGE**

HOME INSPECTION SOFTWARE

NOW WITH



**STREAMING  
INSPECTION  
VIDEOS**



Providing the best protection at the best price.

The InspectorPRO insurance program has been specifically designed for property inspectors.

By providing insurance solely to inspectors, InspectorPRO helps members achieve substantial savings on their E&O Insurance.

**General & Professional Liability**

**Coverage Limits Available:**

- \$2,000,000
- \$1,000,000
- \$500,000
- \$300,000
- \$100,000

**Deductibles:**

- \$250 General Liability
- \$1,500, \$2,500, or \$5,000 Errors & Omissions

General and Professional Liability are both written by the same carrier.

There are no sublimits on any of our endorsements.

**HIGHLIGHTS**

1. Policy covers both E&O and GL
2. Retro-Active coverage included (proof of retro required)
3. Realtor and Referring Party Indemnification included
4. Multi-inspector coverage available on one policy
5. Residential and Commercial inspection coverage included standard
6. There are endorsements for the following:  
Mold, Water Testing and Septic, Pool and Spa, Radon, Termite/Pest/WDI And More!
7. Energy Audits, Infrared, 203K Inspections, etc. Included
8. Diminishing Deductible
9. Aggressive Claims Process
10. Financing Available

Call or Go Online Today to Apply

phone: 801.610.2735  
[www.InspectorPROinsurance.com](http://www.InspectorPROinsurance.com)

**Stay in touch with WAHI's Facebook Page**



**Our WAHI Facebook page gives you the perfect opportunity to make chapter announcements, post minutes, post meeting changes or just see what your fellow members have been up to.**

**Please contact Bob Turicik with questions at 920-892-7654 or [homeview@wi.rr.com](mailto:homeview@wi.rr.com)**



**Add a Photo to the WAHI Website and Link it to Your Business Site!**

**WAHI's website member database has a NEW and IMPROVED multi-choice search option.**

**Submit photo and/or company website addresses/information to:**

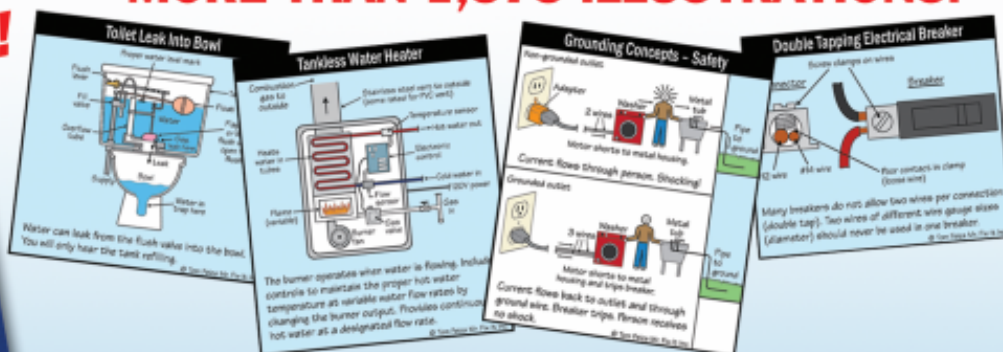
**[info@wahigroup.com](mailto:info@wahigroup.com)**



**New Lower Price  
and Free Shipping!**  
**FOURTH EDITION**



**MORE THAN 1,575 ILLUSTRATIONS!**



More than 1,575 detailed JPEG illustrations of home systems and common problems on a CD/DVD. These illustrations will enhance your reports, marketing materials, presentations and website.

**Includes more than 250 color illustrations**, more than 150 Spanish illustrations, and a 336-page reference book. Impress your customers and save time. "An illustration is worth a thousand words!"

Price: \$295.95. New Lower Price: \$236.00.

Visit [www.htoyh.com](http://www.htoyh.com) to see all of our books and marketing products that can give your business a boost. Contact us at [mail@htoyh.com](mailto:mail@htoyh.com)



**HOW TO OPERATE  
YOUR HOME**

[www.htoyh.com](http://www.htoyh.com) • 262-303-4884

*Marketing products that help your customers ... and boost your business!*



**We encourage members to keep in contact and make sure their information is current!**

**We want other members and potential clients to be able to contact you.**

**Also, we send interesting, timely emails that you may miss our on if your contact information is out of date**

**If your information has changed, please see page 6 of this newsletter to log-in and update your profile or contact Julie at:**

**[Julie@wahigroup.com](mailto:Julie@wahigroup.com)**

## CHAPTER SECRETARIES

You are reminded to include upcoming speakers and topic information when you submit monthly meeting minutes to Julie Arnstein at [julie@wahigroup.com](mailto:julie@wahigroup.com)

The information will be included in the monthly newsletter and will also be posted on our website at:

[www.wahigroup.com](http://www.wahigroup.com)



*"Thank you. We sure do appreciate everyone at OREP. Worry free service year after year!"*

*— Alan, HousePro Home Inspections*

# Complete Coverage Should Never Be Optional

## Home Inspector E&O & GL Broad Policy, Peace of Mind

- ▶ \*Included: E&O, General Liability, termite/pest, commercial, radon, lead paint, pool/spa, EIFS/stucco, indoor air quality testing, green building inspections, infrared thermography, rodent inspections, and more. Mold and Septic/Water testing available.

### Plus

- ▶ "A" Rated, Admitted Carrier, Prior Acts, Additional Insured for Agents and other Referring Parties.
- ▶ No Hassle, No Quote Application saves time. Automatic annual renewal for most insureds at the same rate or lower with no application.
- ▶ "First Defense" defends and protects insureds against merit-less and frivolous complaints before they take root, potentially saving inspectors deductible expense, higher premiums and a negative claims history.
- ▶ Coverage for all inspectors employed by the firm and the first two independent contractors free.
- ▶ OREP Professional Support Network: free on-demand technical support, contract review, discounted approved CE, *Working RE* Magazine, corporate rates on office supplies, technology and more.



Find details at [www.OREP.org](http://www.OREP.org)

**(888) 347-5273**

### SERVICE

*"Hey Matt... I collected many estimates but the combination of value, flexibility and knowledge was unsurpassed by OREP..*

*Maria patiently answered all of my questions and moved pretty quickly when I pulled the trigger. Let's hope I can never tell you how good the service is beyond that!"*

*— Henry "Sonny" Toman*

6760 University Ave. #250 • San Diego, CA 92115

Fax: (708) 570-5786 • [info@orep.org](mailto:info@orep.org)

David Brauner: Calif. Insurance Lic. #0C89873



*We're not just good, we're Accurate!*

## **Foundation Restoration and Waterproofing**

***We've never missed a closing deadline!***

After your inspection is complete, if your buyer's/seller's property has signs of possible foundation repair or water seepage, we are ready to respond.



***Nationally Certified Foundation Repair Staff***



**FULL SERVICE**

**Call: (414) 744-6900**

[www.accuratebasementrepair.com](http://www.accuratebasementrepair.com) • Milwaukee, WI

### BOARD MEETING

The next board meeting will be Friday, March 18th from 2:00 to 5:00 pm in conjunction with the WAHI Spring 2016 Education House and Training Seminar at The Clarion Hotel and Conference Center, on Howell Avenue in Milwaukee.

All WAHI members are welcome - please contact Julie Arnstein by Friday, March 11th if you would like to attend -

[julie@wahigroup.com](mailto:julie@wahigroup.com) or 877.399.WAHI.

If you are unable to attend but have a concern or thought you would like the board to address, please contact your Chapter Elected Member at Large.

### SPECIAL SPACES FOR KIDS



Longtime Milwaukee Chapter member and Embassy Homes architectural designer, Andrew Risch, is involved in the Special Spaces organization.

Special spaces, is a non-profit that creates dream bedrooms for children with life threatening illnesses. The program is always looking for volunteers. If you would like to give of your time and talents, please contact Andrew at 262-841-8510 x111 or [Andrew@embassyhomes.com](mailto:Andrew@embassyhomes.com).

[specialspacesmilwaukee.org](http://specialspacesmilwaukee.org)



# Charlie's House

A couple of our members attended ASHI Inspection World 2016. They were very impressed with an organization they discovered, Charlie's House, and felt the information would be valuable to you and your clients.

*On November 1, 2007, Charlie Horn, a 2-year-old Kansas City boy, was killed when he attempted to climb a 30" dresser in his home. It was through this tragedy that Charlie's House was born.*

*What started as a memorial and an outpouring of public support has grown into a 501 (c)(3) not for profit organization with safety at its core - dedicated to keeping the community informed and engaged when it comes to preventing injuries to children in and around the home.*

*As part of this mission, Charlie's House participates in and sponsors community-wide events to provide home safety information. Plans are also underway to raise funds for a safety demonstration house that will provide adults with real-life demonstrations, examples and resources on children's safety.*

**For further information visit their website - <http://charlieshouse.org/>**



## Services



- ◇ Water damage assessments\*
- ◇ Fungal (mold) analysis & testing\*
- ◇ Asbestos testing
- ◇ Allergen & chemical sampling
- ◇ Industrial hygiene

\* Results provided immediately on-site

**Come join us in the hospitality suite during the WAHI convention and enjoy complimentary test tube shots & microbrews at our BIOBar.**

Environmental Initiatives LLC

(414) 651-6653 | (608)790-2665 | (847) 293-7554 | (920) 253-1247

Toll Free: (877) OK-ENVIRO (653-6847)

[www.enviroinit.com](http://www.enviroinit.com)

# WANT TO BOOK MORE INSPECTIONS?

FIND OUT HOW WE CAN HELP YOUR BUSINESS!

LEAD GENERATION  
WEB DESIGN  
SEARCH MARKETING



[KVFmarketing.com](http://KVFmarketing.com)

## WAHI Legal Support

Attorney Roy Wagner of von Briesen and Roper continues to offer risk-free initial counseling to members with Legal concerns. If further legal assistance is requested, the cost of the initial consultation will be included in the bill.



**Contact Roy Wagner at  
(414) 287-1250 or  
rwagner@vonbriesen.com.**

## COMMUNICATION

All member-to-member or member-to-association disputes must go through the Membership Committee. A member going public, with disputes of these types, risks disciplinary action.

The Membership Committee will implement this policy.

**Contact Joy Douthwaite Bott at  
414-395-0639 or email her at  
joy@thoroughinspectionsservices.com**

## WAHI Arbitration Program



Not every homeowner/inspector interaction goes smoothly. Although all members are encouraged to make every effort to resolve disputes on their own, we know that is not always successful. *WAHI's Dispute Resolution Program* is here for you during those difficult times.

**The process begins when the complainant (homeowner) contacts the Program Administrator at Resolute Systems by one of the following ways:**

**Mail:** 1550 N. Prospect Ave, Milwaukee, WI 53020

**Email:** [info@ResoluteSystems.com](mailto:info@ResoluteSystems.com)

**Website:** [www.resolutesystems.com](http://www.resolutesystems.com)

For more information, please contact Arbitration Committee Chair,  
**Mark Thomas**  
at (414) 486-2367 or  
[mark@thomasbuildingconsulting.com](mailto:mark@thomasbuildingconsulting.com)



# NEW MEMBERS

Anthony Ahlers (Fox Valley)  
*Home Inspector Member*  
Happy Home Inspections, LLC.  
920-574-0297  
tony@happyhomeinspect.com

Ben Arendt (Fox Valley)  
*Home Inspector Member*  
AmeriSpec  
920-540-4907  
barendt@amerispec.net

Nancy Baron (Out of State)  
*Affiliate Member - Reporting Software*  
HomeHubZone  
802-279-4170  
marketing@homehubzone.com  
www.homehubzone.com

Bruce Blum (Milwaukee)  
*Affiliate Member - Insurance*  
Mutual of Omaha  
262-215-9123  
bblum1031@yahoo.com  
www.BruceBlum.biz

Joseph Chitko (Milwaukee)  
*Home Inspector Member*  
5 by 5 Home Inspection, LLC.  
414-333-7702  
jchitko1@wi.rr.com

Tyler Groshek (Central)  
*Home Inspector Member*  
Pro-Tec Home Inspections, LLC.  
715-212-7341  
tylergroshek@gmail.com

Joel Markuson (Chippewa Valley)  
*Home Inspector Member*  
JPM Inspections  
715-225-0385  
jpmarkuson@gmail.com

Lindsay Mefford (Madison)  
*Affiliate Member - Radon Testing*  
Madison Radon Testing, LLC.  
608-438-7831  
madisonradontest@gmail.com  
www.MadisonRadonTest.com



# OfficeMax®

## GET DISCOUNTS WITH YOUR RETAIL CONNECT<sup>SM</sup> CARD

Below is your new OfficeMax Retail Connect<sup>SM</sup> Card. This card provides you with access to your company's prices on office supplies and printing services from OfficeMax ImPress<sup>TM</sup> at any of the nearly 900 OfficeMax retail locations.

To take advantage of your special pricing:

1. Take your card to the OfficeMax ImPress<sup>TM</sup> counter. With your first purchase, we'll laminate it for free.
2. The cashier will scan your card to pull up your company's pricing.
3. All items included in your agreement will be automatically priced at your special pricing, and instantly displayed at the register.



OfficeMax ImPress is your printing services resource. Whatever your printing needs, we can do it. And do it better. From training manuals to banners, our services deliver more than you ever imagined.

Some of the services available to you include:

- Digital Color
- Digital Black and White
- Binding and Finishing Services
- Posters, Banners and Signs
- Business Cards and Stationery



For the OfficeMax retail store nearest you, visit [www.officemax.com](http://www.officemax.com) and use the store finder.



**OfficeMax®**  
Retail Connect<sup>SM</sup> Card

WAHI

8888-0001-0594-8967-61

Present to any OfficeMax retail store. Receive your company's price on office supplies and print services.



**OfficeMax®**



888800010594896761

Present to any OfficeMax retail store. Receive your company's price on office supplies and print services. Take your card to the OfficeMax ImPress<sup>TM</sup> counter. With your first purchase, we'll laminate it for free.

# BOARD OF DIRECTORS

<b>President</b> Doug Hoerth (920) 375-0723	Brian Opelt (715) 937-2002
<b>Vice President</b> Tom Kruse (608) 782-8831	Dave Pribyl (920) 660-3000
<b>Secretary &amp; Executive Director</b> Julie Arnstein (877) 399-9244	David Strandburg (608) 255-3966
<b>Treasurer</b> Tom Greenwaldt (262) 547-3678	Mike von Gunten (262) 945-2446
<b>Members-at-Large</b> Tom Dempsey (262) 367-1536	<b>Chapter Presidents</b> Rich Duerkop, <b>Central</b> (715) 241-8222
Joy Douthwaite Bott (414) 395-0639	David Welch, <b>Chippewa Valley</b> (920) 889-2120
Andy Helgeon (262) 377-0751	Dave Brading, <b>Fox Valley</b> (920) 889-2120
Scott McLean (414) 228-6573	Dennis Kruger, <b>Madison</b> (608) 575-0371
	James Smead, <b>Milwaukee</b> (262) 424-4839

# WAHI COMMITTEES

<b>Arbitration</b> Mark Thomas, Chair Dave Brading • Ron Nohre Attorney Roy Wagner Kyle Zimmerman	<b>Membership</b> Joy Douthwaite Bott, Chair Roger Kautz Scot McLean Brian Opelt David Pribyl Kyle Zimmerman <i>Seeking Affiliate members</i>
<b>Audit</b> Tom Greenwaldt, Chair James Davis • George Finch Danny Kruger • Nathan Peterson Dave Stoinski	<b>Nominations/Elections</b> Andy Helgeson, Chair Dave Brading • Rich Duerkop • Dennis Kruger Cassidy Kuchenbecker James Smead • Dave Welch
<b>Education</b> Tom Kruse, Co-Chair John Moore, Co-Chair Chris Rhodes • Pete Saltness James Smead Mike von Gunten	<b>Public Relations</b> Bob Turicik, Chair Troy Beasley • Bruce Low Nick Petrie • Chuck Weber
<b>Education House</b> James Smead, Chair Mike von Gunten	<b>Rules &amp; Bylaws</b> Andy Helgeson, Chair Tom Dempsey Tom Greenwaldt
<b>Legal Support</b> <i>Chair position is vacant</i> Ron Miller • Attorney Roy Wagner <i>Seeking 3 more members</i>	<b>Website</b> Doug Hoerth, Chair Keith Vanevenhoven
<b>Legislative</b> David Strandberg, Chair	

## E&O Insurance for Inspectors

### Allen Insurance Group

Phone: 800-474-4472 x172  
Great service. Many choices and fee schedules. Covers radon too.

### Associations Liability Insurance Agency

Phone: 800-882-4410  
Offers competitive rates, a low deductible and a package of  
Other benefits. Rates for commercial and residential inspections, not based  
on volume or revenue.

### Citadel Insurance Services, LLC.

826 E. State Road, #100, American Fork, UT 84003  
Contact: Jason Fiack, 801-610-2735  
Fax: 801-610-2701  
[www.inspectorproinsurance.com](http://www.inspectorproinsurance.com)  
General liability and E&O insurance for home and building inspectors.

### Coverra Insurance Services

535 Industrial Drive, Sparta, WI 54656  
Contact: Jeff Ascher, 608-269-2127  
Fax: 267-647-3247  
jascher@coverrainurance.com  
[www.coverrainurance.com](http://www.coverrainurance.com)

### Hanover Insurance

330 E. Kilbourn Avenue, #650, Milwaukee, WI 53202  
Contact: Jeff Frank, 414-221-0364  
jfrank@robertsonryan.com  
[www.robertsonryan.com](http://www.robertsonryan.com)

### Mutual of Omaha

N7365 Lost Nation Road, Elkhorn, WI 53121  
Contact: Bruce Blum, 262-215-9123  
bblum1031@yahoo.com  
[www.BruceBlum.biz](http://www.BruceBlum.biz)

### OREP

6760 University Ave, #250, San Diego, CA 92115  
Contact: Isaac Peck  
Phone: 888-347-5273  
Fax: 619-704-0567  
info@orep.org  
[www.orep.org](http://www.orep.org)  
Includes premises coverage and most incidental coverages.  
Competitive rates.

### Vincent, Urban & Walker

Phone: 920-432-7246  
Many types and companies. Services individual inspectors, fee based on  
volume. Covers radon too.

### Zolofra Insurance Agency

Phone: 888-858-1777  
[www.allprocoverage.com](http://www.allprocoverage.com)  
Multiple carriers. Coverage on mold and lead testing, septic, pest and pool  
inspections, prior acts, workers comp., commercial auto and more.